

BibleTime žinynas

**Fred Saalbach
Jeffrey Hoyt
Martin Gruner
Thomas Abthorpe
Gary Holmlund**

BibleTime žinynas

by Fred Saalbach, Jeffrey Hoyt, Martin Gruner, Thomas Abthorpe, and Gary Holmlund

3.0.0+

Copyright © 1999-2025 The BibleTime Team

Abstract

BibleTime is a completely free Bible study program. The program's user interface is built with the Qt framework, which makes it run on several operating systems including Linux, Windows, FreeBSD and Mac OS X. The software uses the SWORD programming library to work with over 900 free Bible texts, commentaries, dictionaries and books in over 50 languages provided by the Crosswire Biblijos Draugija and several other repositories.

BibleTime Žinynas yra platinamas kartu su BibleTime studijavimo programa.

Table of Contents

| | |
|--|----|
| 1. #žanga | 1 |
| Apie BibleTime | 1 |
| Prieinamos veiklos | 1 |
| Motyvacija | 2 |
| 2. BibleTime paleidimas | 3 |
| Kaip paleisti BibleTime | 3 |
| BibleTime paleidimas | 3 |
| Paleisties tinkinimas | 3 |
| Pirmasis BibleTime paleidimas | 3 |
| 3. Programos darbas | 4 |
| Programos apžvalga | 4 |
| BibleTime programos lango dalys | 4 |
| Knyg# lentyna | 4 |
| Perži#ros langelis | 5 |
| Stalas | 5 |
| Paieška veiklose | 6 |
| Paieška atverto skaitymo lango tekste | 6 |
| Prieiga prie paieškos dialogo | 6 |
| Paieškos konfig#racija | 7 |
| Paieškos rezultatai | 8 |
| Knyg# lentynos tvarkytuv# | 9 |
| Install works | 9 |
| Update works | 9 |
| Remove works | 9 |
| Eksportavimas ir spausdinimas | 10 |
| 4. BibleTime konfig#ravimas | 11 |
| BibleTime konfig#ravimo dialogo langas | 11 |
| Rodymas | 11 |
| Stalas | 11 |
| Kalbos | 11 |
| Spartieji klavišai | 13 |
| 5. Nuoroda | 15 |
| Pagrindinio meniu nuorodos | 15 |
| Failas | 15 |
| Rodinys | 15 |
| Paieška | 16 |
| Langas | 16 |
| Nustatymai | 17 |
| Pagalba | 17 |
| Veikl# rodykl# | 18 |
| | 18 |
| Spar#i#j# klaviš# indeksas | 19 |

List of Tables

| | |
|----------------------------|----|
| 3.1. Paieškos tipai | 8 |
| 4.1. Unicode šriftai | 13 |

Chapter 1. #žanga

Apie BibleTime

BibleTime yra Biblijos studijavimo #rankis, palaikantis #vairius teksto tipus ir kalbas. Netgi didelius veickl# moduli# kiekius yra lengva #diegti ir tvarkyti. Programa yra sukurta SWORD [<http://www.crosswire.org/sword/>] bibliotekos pagrindu. Ši biblioteka suteikia vidin#s BibleTime pus#s funkcionalum#, tok# kaip Biblijos tekst# rodym#, paiešk# ir t. t. SWORD yra Crosswire Biblijos Draugija [<http://www.crosswire.org>] geriausias parodomasis produktas.

BibleTime yra sukurta naudoti su veiklomis, užkoduotomis vienu iš SWORD projekto palaikom# format#. Vis# informacij# apie palaikomus dokument# formatus galite rasti Crosswire Biblijos Draugija SWORD projekto k#r#j# sekcijoje [<http://www.crosswire.org/sword/develop/index.jsp>].

Prieinamos veiklos

Over 280 documents in 50 languages are available from the Crosswire Biblijos Draugija [<http://www.crosswire.org>]. These include:

Biblijos

Pilni Biblijos tekstai su pasirinktiniais, tekste esan#i-ais dalykais, tokiais kaip Strongo numeriai, antrašt#s ir/ar porašt#s. Biblijos yra prieinamos daugeliu kalb#, jose yra ne tik šiuolaikin#s versijos, bet taip pat ir senoviniai tekstai, tokie kaip Codex Leningradensis ("WLC", Hebraj#), ir Septuagint ("LXX", Graik#). Tai yra labiausiai išpl#sta SWORD projekto bibliotekos sekcija.

Knygos

Books available include "Imitation of Christ", "Enuma Elish", and "Josephus: The Complete Works"

Komentarai

Commentaries available include classics like John Wesley's "Notes on the Bible", Matthew Henry's commentary and Luther's "Commentary on Galatians." With the *Personal* commentary you can record your own personal notes to sections of the Bible.

Kadieniai pašventimai

Many people appreciate these daily portions from God's word. Available works include Daily Light on the Daily Path, and the Losungen.

Leksikonai/Žodynai

Lexicons available include: Robinson's Morphological Analysis Codes, and the International Standard Bible Encyclopaedia. Dictionaries available include Strong's Hebrew Bible Dictionary, Strong's Greek Bible Dictionary, Webster's Revised Unabridged Dictionary of the English Language 1913, Nave's Topical Bible.

There are several other repositories that BibleTime will load and use.

Motyvacija

Mūsų noras yra tarnauti Dievui ir padaryti savo dalį, padedant kitiems augti santykiuose su Juo. Mes siekiame šią programą padaryti galingą, kokybišką, bet tuo pačiu metu ir lengvai bei intuityviai naudojamą. Mes norime, kad būtumėte pašlovintas Dievas, kadangi Jis yra visų gerų dalykų šaltinis.

Kiekvienas geras davinys ir tobula dovana ateina iš aukštybių, nužengia nuo šviesybių
Tavo, kuriame nėra jokių atmainų ir jokių sambrūkų.

—Jokibo 1,17, Biblija RK_K1998

Telaimina jus Dievas, besinaudojant šia programa.

Chapter 2. BibleTime paleidimas

Kaip paleisti BibleTime

BibleTime paleidimas

BibleTime yra vykdomasis failas, kuris yra integruotas su jūsų darbalaukiu. Galite paleisti BibleTime iš Pradžios meniu, naudodamiesi šia piktograma:



BibleTime taip pat gali būti paleista iš terminalo komandų eilutės. Kad paleistumėte BibleTime, atverkite terminalo langą ir įrašykite:

```
bibletime
```

Paleisties tinkinimas

Terminale, galite naudoti BibleTime, kad numatytoje Biblijoje atvertumėte atsitiktinę eilutę:

```
bibletime --open-default-bible "<random>"
```

Kad atvertumėte nurodytoje vietoje, tokioje kaip Jono 3:16, naudokite:

```
bibletime --open-default-bible "Jono 3:16"
```

Galite taip pat naudoti knygos pavadinimus savo esamos kalbos knygos pavadinimų kalba.

Pirmasis BibleTime paleidimas

Jeigu BibleTime paleidžiate pirmą kartą, tikriausiai, norite sukonfigūruoti Nustatymų meniu juostoje prieinamas sekančias parinktis.

Knygos lentynos tvarkytuvai

Modifies your Bookshelf. This dialog lets you modify your Bookshelf, add or delete works from your system. It will only be shown if no default Bookshelf can be found. Please see The Bookshelf Manager section for further details. If you start off with an empty Bookshelf, it will be helpful to install at least one Bible, Commentary, Lexicon and one Book to get to know BibleTime's basic features quickly. You will be presented with a list of works that are available from the Crosswire Biblijos Draugija and other repositories;

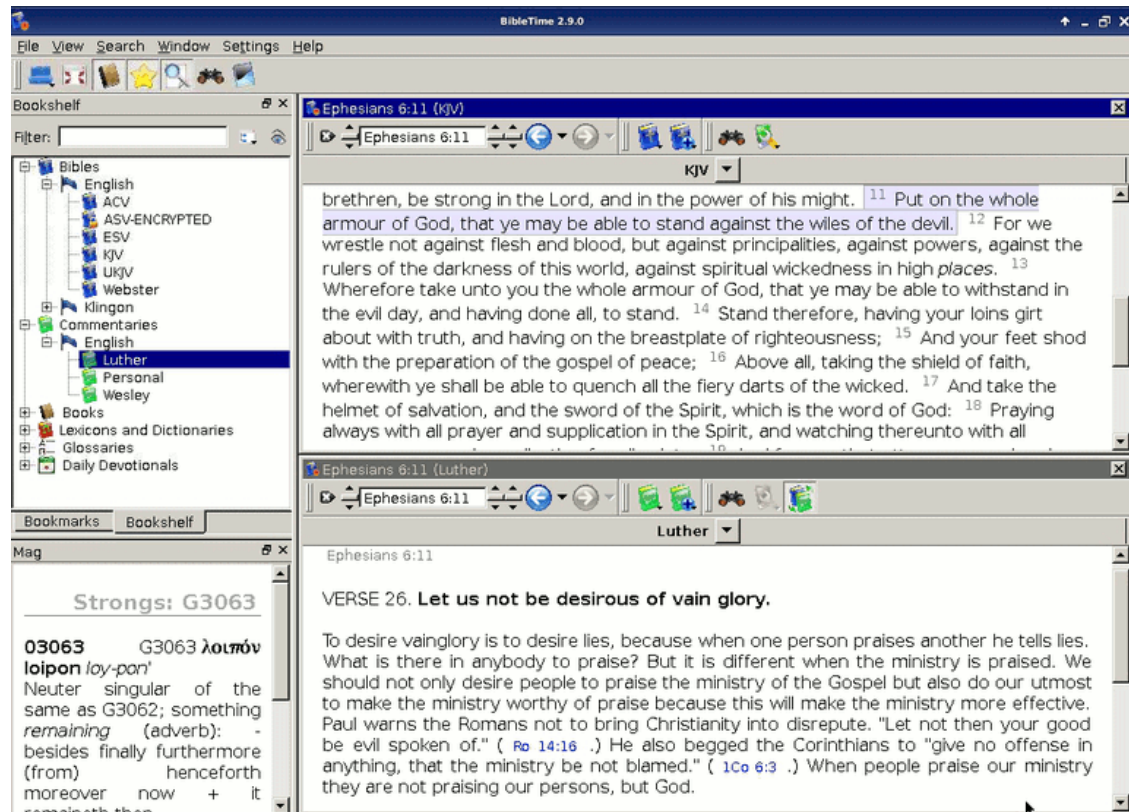
BibleTime konfigūravimo dialogas

Individualizuoja BibleTime. Šis dialogas leidžia jums pritaikyti BibleTime savo reikmėms. Prašome žiūrėti išsamesnį šio dialogo aprašą.

Chapter 3. Programos darbas

Programos apžvalga

This is what a typical BibleTime session looks like:



You can easily see the different parts of the application. The top left window is used to open installed works in the Bookshelf tab, and with the Bookmarks tab you can manage your bookmarks. The little "Mag" window below the Bookshelf is used to display extra information that is embedded in documents. When you move your mouse over a footnote marker, for example, then the Mag will display the actual content of the footnote. The toolbar gives you quick access to important functions, and the Desk on the right side is where you do your real work.

Dabar t#skime ir atskirai apžvelkime #vairias programos dalis.

BibleTime programos lango dalys

Knyg# lentyna

The Bookshelf lists all installed works, sorted by category and language. It also has a category called "Bookmarks". This is where you can store and access your own bookmarks.

Opening works

To open a work from the bookshelf for reading, simply double-click with the left mouse button on the desired category (Bibles, Commentaries, Lexicons, Books, Devotionals or Glossaries) to display its con-

tents. Then just double-click on one of the works to open it for reading. A read window will appear in the Desk area.

If you are reading a certain work, and want to open another work at the passage you are reading, you can use a shortcut. Simply click with the left mouse button on the verse/passage reference (pointer changes to hand) and drag it to the Bookshelf. Drop it on the work you want to open, and it will be opened for reading at the specified location. You can also drag a verse reference into an existing read window, then it will jump to the specified location.

Papildoma informacija apie veiklas

If you click with the right mouse button on the symbol of a work, you will see a menu with additional entries that are relevant for this work. "About this work" opens a window with lots of interesting information about the selected work. "Unlock this work" opens a small dialog for encrypted documents, where you can enter the unlock key to access the work. For additional information on locked works, please see the Locked Modules [<http://www.crosswire.org/sword/modules/aboutlocked.jsp>] page on the Crosswire Biblijos Draugija web site.

Paieška veiklose

You can search in a work by clicking with the right mouse button on its symbol and selecting "Search in work(s)". By pressing Shift and clicking on other works you can select more than one. Then follow the same procedure to open the search dialog. You will be searching in all of these documents. A complete description of the operation of the search features can be found on the Searching in Works section.

Darbas su adresynu

Tip

Drag & Drop Works Here

Click with the right mouse button on the bookmark category of the bookshelf and select "Create new folder" to create a new bookmark subfolder. You can use normal drag & drop functions to drag verse references from read windows or search results to the bookmark folder, and to rearrange bookmarks between folders.

You can also import bookmarks from other people or export bookmarks to share them. To do this, open the context menu of the bookmark folder as described above, and select "Export bookmarks". This will bring up a dialog box for you to save the bookmark collection. You can import bookmarks in a similar way.

You can also click with the right on folders and bookmarks to change their names and descriptions.

Peržiūros langelis

This little window in the lower left corner of the BibleTime window is purely passive. Whenever your mouse cursor is located over some text with additional information (e.g., Strong's numbers), then this additional information will be displayed in the Mag, and not in the text itself. Just try it out.

Stalas

The Desk is where the real work with BibleTime takes place. Here you can open works from the Bookshelf, read them, search in them, and even save your annotations in the personal commentary module (see below).

Veiklų skaitymas

As we have already seen, you can open works for reading simply by clicking on their symbol in the Bookshelf. A read window will open in the Desk's area. Every read window has a toolbar. There you can

find tools to navigate in the work that this read window is connected to, as well as history buttons like the ones that you know from your browser.

Auto Scrolling

The currently active window can be auto scrolled up or down. Start scrolling by press Shift+Down. You can increase the scrolling speed by pressing Shift+Down multiple times. To pause scrolling press Space. To start scrolling again at the previous speed press Space again. To slow down scrolling or scroll the other direction press Shift+Up one or more times. Pressing any other key or changing the active window will stop the scrolling.

Skaitymo lango vieta

Of course, you can open multiple works at the same time. There are several possibilities for arranging the read windows on the desk. Please have a look at the entry Window in the main menu. There you can see that you can either control the placement of the read windows completely yourself, or have BibleTime handle the placement automatically. To achieve this, you have to select one of the automatic placement modes available at Window → Arrangement mode. Just try it out, it's simple and works.

Jūsų asmeninių komentarų redagavimas

To be able to store your own comments about parts of the Bible, you have install a certain work from the library of the Crosswire Biblijos Draugija [<http://www.crosswire.org>]. This work is called "Personal commentary".

Open the personal commentary by clicking on its symbol in the Bookshelf with a left mouse button. You can edit this commentary by just clicking on any verse. A dialog opens which allows you to add or edit text for that verse.

Tip

If Edit this work is deactivated, please check if you have write permission for the files of the personal commentary.

Tip

Drag & drop works here. Drop a verse reference and the text of the verse will be inserted.

Paieška veiklose

Paieška atverto skaitymo lango tekste

You can look for a word or phrase in the open read window (e.g. the chapter of a bible that you're reading) just like you are used to from other programs. This function can be reached either by clicking with the right mouse button and selecting Find..., or by using the shortcut **CtrlF**. Read on to learn how you can search in entire works.

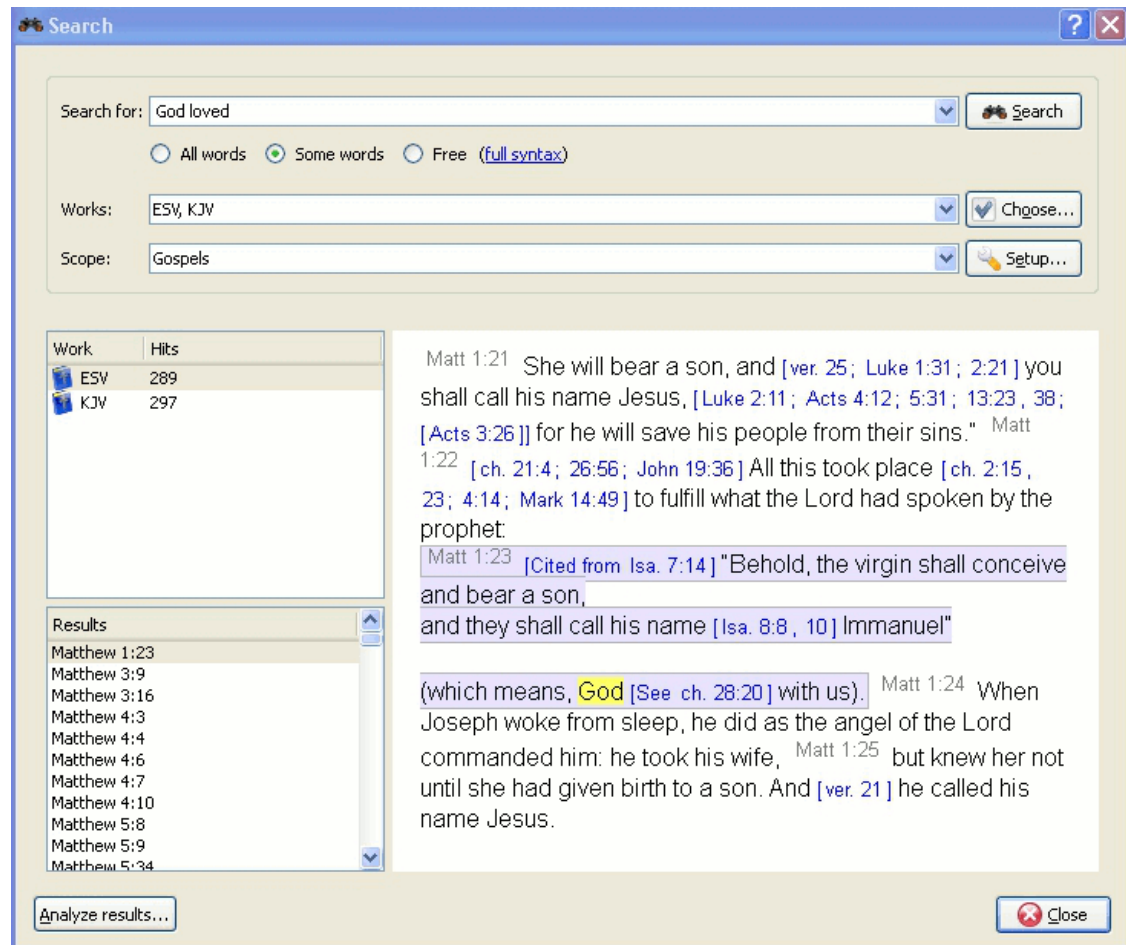
Prieiga prie paieškos dialogo

You can search in a work by clicking with the right mouse button on its symbol in the Bookshelf and selecting Search in work(s). By holding Shift or Ctrl and clicking on other work's names you can select more than one. Then follow the same procedure to open the search dialog. You will be searching in all of these works at the same time.

You can also access the search dialog by clicking on Search from the main menu, and selecting the appropriate entry.

A third possibility to start searches is to click on the search symbol in an open read window.

Paieškos konfiguracija



Veikl# pasirinkimas

At the top of the options tab you will find Choose(works). If you would like to search in multiple works, click on this button and you will be offered a menu where you can select the works you want to search in.

Paieškos r#ži# naudojimas

You can narrow the scope of your search to certain parts of the Bible by selecting one of the predefined scopes from the list in Search scope. You can define your own search ranges by clicking the Setup ranges button.

Pagrindin#s paieškos sintaks#s pristatymas

Enter the search phrase separated by spaces. By default the search function will return results that match all the words. If you want to find any of the words entered, select the Some words button. If you want to perform a more complex search, select the Free button. You can see examples of searches by clicking on full syntax.

You can use wildcards: '*' matches any number of characters, while '?' will match any single character. The use of parenthesis allows you to group your search terms, e.g. '(Jesus OR spirit) AND God'.

To search text other than the main text, enter the text type followed by ':', and then the search term. Refer to the table below for examples.

Available text types:

Table 3.1. Paieškos tipai

| Priešd#lis | Reikšm# | Pavyzdys |
|------------|-------------------------------|----------------|
| heading: | ieško antrašt#se | heading:J#zus |
| footnote: | ieško išnašose | footnote:Moses |
| strong: | ieško Strongo numeriuose | strong:G535 |
| morph: | ieško morfologiniuose koduose | morph:N-GSM |

Tip

You can right click on an installed work and select About to find which of the above search criteria may work for you. Not all works have the built in features for performing this type of search.

BibleTime j#s# paieškos atlikti naudoja Lucene paieškos modul#. Jame yra daug išpl#stini# ypatybi#, o daugiau apie j# galite perskaityti #ia: <http://lucene.apache.org/java/docs/index.html> [<http://lucene.apache.org/java/docs/index.html>].

Paieškos rezultatai

Here you can see how many instances of the search string were found, sorted by works. Clicking on a work with the right mouse button allows you to copy, save, or print all verses that were found in a certain work at once. This also works when you click on one or more of the references to copy, save or print them. Clicking on a particular reference opens that verse up in context in the preview window below.

Tip

Drag a reference and drop it on a work symbol on the Bookshelf to open the work at that verse in a new read window.

Tip

Drag a reference and drop it on an open read window, and it will jump to that verse.

Tip

Select references and drag them to the Bookshelf to create bookmarks.

Paieškos rezultat# analiz#

Click on Search analysis to open the search analysis display. This gives a simple graphic analysis of the number of instances the search string was found in each book of the Bible, and you can also save the analysis.



Knyg# lentynos tvarkytuv#

The Bookshelf Manager is a tool to manage your Bookshelf. You can install new works to your Bookshelf, and update or remove existing works from your Bookshelf. Access it by clicking Settings → Bookshelf Manager in the main menu.

Install works

With this facility, you can connect to a repository of works (called "library"), and transfer one or more works to your local Bookshelf. These libraries may be local (e.g. a SWORD CD), or remote (e.g. Crosswire's online repository of SWORD modules, or another site offering SWORD modules). BibleTime will automatically maintain a list of remote libraries and the works available from them.

To begin the installation process, select one or more libraries that you want to install works from. Then click on the Next button. Then select one or more languages and click the Next button. You will see a list of categories. Double-click on a category to see works for that category. Select one or more works and then click on the Install Works. After the works are installed, click on the Finish.

Update works

If there are any works that can be updated, they will be shown. Select one or more work and click the Update Works. After the works are updated, click on the Finish.

Remove works

This facility allows you to delete one or more of the works from your Bookshelf too free up disk space. Simply choose the works` and click on the Remove works button.

Eksportavimas ir spausdinimas

In many places, you can open a context menu by clicking with the right mouse button. Depending on context, it will allow you to Select, Copy (to clipboard), Save or Print text. This works for example in the read windows, when you click on the normal text or the verse reference, or in the search result page when you click on a work or one or more verse references. It is pretty straightforward, so just try it out.

Printing from BibleTime is rather basic and is intended as a utility. If you are composing a document or presentation containing text from BibleTime works, we suggest that you use one of the presentation or editing tools on your system to format your document, rather than printing from BibleTime directly.

Chapter 4. BibleTime konfig#ravimas

Šioje sekcijoje j#s rasite BibleTime konfig#ravimo apžvalg#, kuri# galima rasti pagrindinio meniu punkte Nustatymai

BibleTime konfig#ravimo dialogo langas

BibleTime naudotojo s#saja, priklausomai nuo j#s# poreiki#, gali b#ti tinkinama #vairiais b#dais. J#s galite pasiekti konfig#ravimo dialogo lang#, pasirinkdami Nustatymai Konfig#ruoti BibleTime.

Rodymas

Paleisties elgsena gali b#ti tinkinama. Pasirinkite iš sekan#i# parink#i#:

- Rodyti prisistatymo logotip#

Rodymo šablonai, apibr#žia teksto atvaizdavim# (spalvas, dyd# ir t. t.). Yra prieinami #vair#s #taisyti šablonai. Pasirink# vien# iš šablon#, dešiniame polangyje matysite perži#r#.

Stalas

Daugelis, SWORD vidin#s pus#s pateikiam#, ypatybi#, dabar, gali b#ti tinkinamos programoje BibleTime. Šios ypatyb#s yra dokumentuotos tiesiai dialoge. J#s taip pat turite galimyb# apibr#žti standartines veiklas, kurios tur#t# b#ti naudojamos, kai nuorodoje n#ra apibr#žta jokia specifin# veikla. Pavyzdys: Standartin# Biblija yra naudojama Biblijos kryžmini# nuorod# turinio rodymui. Kai ant j# užvedate pel#, Perži#ros langelis rodys nurodom# eilu#i# turin#, atitinkamai j#s# nurodytos standartin#s Biblijos. Naudodami teksto filtrus, galite valdyti teksto išvaizd#.

Kalbos

#ia galite nurodyti, kokia kalba tur#t# b#ti rodomi Biblijos knyg# pavadinimai. Nusistatykite ši# parinkt# # savo gimt#j# kalb#, jei ji prieinama, ir jausit#s kaip namie.

Pagal numatym#, BibleTime naudoja numatyt#j# sistemos šrift#. Jei b#tina, galite nustelbti š# šrift#. Kai kurios kalbos tam, kad b#t# teisingai rodomos, reikalauja ypating# šrift# ir šis dialogo langas kiekvienai kalbai leidžia jums nurodyti pasirinktin# šrift#.



Parinkti langas - Šriftai.

Dabar BibleTime gali naudoti visus palaikomus šriftus. Tol, kol jus dominanios veiklos yra rodomos teisingai, jia nieko nereikia daryti. Jei veikla rodo tik eilę klaustukų (?????) arba tušias d#žutes, žinokite, kad standartiniame rodymo šrifte nėra šioje veikloje naudojamų simbolių.

Nor#dami tai ištaisyti, iš išskleidžiamojo meniu pasirinkite šios veiklos kalb#. Pažym#kite žymim# langel# "Naudoti tinkint# šrift#". Pavyzdžiui, daugel# kalb# palaikantis šriftas yra Code2000. Jei n# vienas #diegtas šriftas nerodo jus dominanios veiklos, pabandykite #diegti tos kalbos lokalizavimo paket#.

Šrift# diegimas

Išsamesni šrift# diegimo nurodymai yra už šio žinyno rib#. Tolimesnei informacijai, galb#t, nor#tum#te kreiptis # Unicode INSTRUKCIJ# [<http://www.linux.org/docs/ldp/howto/Unicode-HOWTO-2.html>].

Šriftai gali b#ti #diegti iš daugelio šaltinių:

- J#s# *nix distribucijos.
- J#s# distribucijos lokalizacijos paket#.
- Tame pa#iame kompiuteryje esan#ios Microsoft Windows® sistemos diegimo.
- Šrift# kolekcij#, toki# kaip yra prieinamos iš Adobe ar Bitstream.
- Žiniatinklio šrift# kolekcij#.

Unicode šriftai palaiko daugiau simboli# nei kiti šriftai, be to, kai kurie iš j# yra prieinami be jokio mokes#io. Nei viename iš prieinam# šrift# n#ra vis#, Unicode standartu, apibr#žt# simboli#, tod#l, galb#t, pageidausite skirtingoms kalboms naudoti skirtingus šriftus.

Table 4.1. Unicode šriftai

| | |
|---|---|
| Code2000 [http://code2000.net/CODE2000.ZIP] | Ko gero, geriausias nemokamas Unicode šriftas, apimantis didel# simboli# skai#i#. |
| SIL unicode šriftai [http://scripts.sil.org/cms/scripts/page.php?site_id=nrsi&cat_id=FontDownloads] | Puik#s Unicode šriftai iš Summer Institute of Linguistics |
| FreeFont [http://www.nongnu.org/freefont/] | Nauja nemokama Unicode šrift# iniciatyva. |
| Crosswire šrift# katalogas [ftp://ftp.crosswire.org/pub/sword/iso/latest/FONTS/] | Keli šriftai prieinami iš Crosswire Biblijos Draugija FTP svetain#s. |
| Bitstream CyberBit [http://aol-4.vo.llnwd.net/pub/communicator/extras/fonts/windows/] | Apima beveik vis# Unicode, ta#iau, d#l savo dydžio, gali sul#tinti BibleTime programos darb#. |
| Clearlyu | #trauktas # kai kurias distribucijas. Sudarytas iš Europos, Graik#, Hebraj#, Taj#. |
| Caslon, Monospace, Cupola, Caliban [http://fontforge.sourceforge.net/sfds/] | Dalinis simboli# palaikymas, ži#r#kite informacij# nurodytoje svetain#je. |

There are good Unicode font lists on the net, as the one by Christoph Singer (Multilingual Unicode TrueType Fonts in the Internet [<http://www.slovo.info/unifonts.htm>]), or the one by Alan Wood (Unicode character ranges and the Unicode fonts that support them [<http://www.alanwood.net/unicode/fonts-byrange.html>]).

Spartieji klavišai

Shortcuts (previously known as HotKeys) are special key commands that can be used in the place of the menu items and icons. A number of BibleTime's commands have predefined Shortcuts (see the Shortcuts section for a complete listing). Most of BibleTime's commands can be assigned Shortcuts. This is very helpful to quickly access the functions that you need the most.



In the preceding example, F2, Bible Study HowTo has a secondary shortcut defined, CTRL+2.

Chapter 5. Nuoroda

Pagrindinio meniu nuorodos

In this section you can find detailed descriptions of all entries in the main menu of BibleTime. They are ordered in just the way they appear in BibleTime, with all the sub-items listed under the major menu item they belong to. You can also see the shortcut of each item; a complete listing of all shortcuts can be found in the shortcuts section.

Failas



Failas Atverti veiks#



→
Failas Baigti (Ctrl+Q)

Atverti veiks#. Tai jums parodys meniu, kuriame leidžiama atverti #diegtas knygas.

Užveria BibleTime. BibleTime j#s# paklaus ar norite # disk# #rašyti neišsaugotus pakeitimus.

Rodiny



Rodiny Viso ekrano veikseną (F5)



→
Rodiny Rodyti kny# lentyn#



→
Rodiny Rodyti adresyn#



→
Rodiny Rodyti perži#ros langel#



→
Rodiny Rodyti lygiagretaus teksto antraštes

Perjungia viso ekrano rodym#. Perjunkite š# nustatym#, kad išdidintum#te BibleTime lang#.

Perjungia Knyg# lentynos rodym#. Perjunkite š# nustatym#, kad išjungtum#te ar #jungtum#te, kairiajame polangyje esan#i#, Knyg# lentyn#. Tai gali praversti, jeigu Perži#ros langeliui reikia daugiau vietos.

Perjungia Adresyno rodym#. Perjunkite š# nustatym#, kad išjungtum#te ar #jungtum#te, kairiajame polangyje esant#, Adresyn#. Tai gali praversti, jeigu Perži#ros langeliui reikia daugiau vietos.

Perjungia Perži#ros langelio rodym#. Perjunkite š# nustatym#, kad išjungtum#te ar #jungtum#te, kairiajame polangyje esant#, Perži#ros langel#.

Perjungia papildom# veiks# rodym#. Šio nustatymo perjungimas, leidžia jums matyti papildomas veiklas lygiagrečiai su j#s# esamomis atvertomis veiklomis.

Rodiny → #ranki# juostos → Rodyti pagrindin# #ranki# juost# (F6)

Perjungia Pagrindin#s #ranki# juostos rodym#. Perjunkite š# nustatym#, kad išjungtum#te ar #jungtum#te pagrindin# #ranki# juost#.

Rodiny → #ranki# juostos → Rodyti naršymo juost#

Perjungia veiklose naršym#. Perjunkite š# nustatym#, kad veiklose prid#tum#te ar

Rodinys → #ranki# juostos → Rodyti veikl# #ranki# juost#

Rodinys → #ranki# juostos → Rodyti #ranki# #ranki# juost#

Rodinys → #ranki# juostos → Rodyti formatavimo #ranki# juost#

Rodinys → #ranki# juostos → Rodyti #ranki# juostas tekstiniuose languose

pašalintum#te Naršymo jungtin# langel#. Tai gali praversti, norint atvertose veiklose matyti vis# #ranki# juost#.

Perjungia veiklose #ranki# juostas. Perjunkite š# nustatym#, kad atvertose veiklose prid#tum#te ar pašalintum#te veikl# piktogramas.

Perjungia veiklose #rankius. Perjunkite š# nustatym#, kad atvertose veiklose prid#tum#te ar pašalintum#te #ranki# piktogramas.

Perjungia formatavim#. Perjunkite š# nustatym#, Asmeniniuose Komentaruose redaguodami HTML. Jis prid#s arba pašalins formatavimo #ranki# juost#.

Perjungia veiklose #ranki# juostas. Perjunkite š# nustatym#, kad atvertose veiklose prid#tum#te ar pašalintum#te piln# #ranki# juost#.

Paieška



Paieška Ieškoti standartin#je Biblijoje (**Ctrl+Alt+F**)



Paieška Ieškoti atvertose veiklose (**Ctrl+O**)



Atveria paieškos dialog#, skirt# ieškoti tik standartin#je Biblijoje. Paieškos dialoge gali b#ti prid#ta daugiau veikl#. Išsamesn# paieškos apraš# galite rasti skyriuje Paieška veiklose.

Atveria paieškos dialog#, skirt# paieškai visose veiklose. Paieškos dialoge veiklos gali b#ti pridedamos arba šalinamos. Išsamesn# paieškos apraš# galite rasti skyriuje Paieška veiklose.

Langas



Langas Užverti lang# (**Ctrl+W**)



Langas Užverti visus langus (**Ctrl+Alt+W**)



Langas Išd#styti pakopomis (**Ctrl+J**)



Langas Išloti (**Ctrl+I**)

Užveria aktyv# lang#.

Užveria visus atvertus langus.

Išd#sto pakopomis visus atvertus langus.

Iškloja visus atvertus langus.



Langas Iškloti vertikaliai (**Ctrl+G**)

Automatiškai vertikaliai iškloja visus atvertus langus.



Langas Iškloti horizontaliai (**Ctrl+H**)

Automatiškai horizontaliai iškloja visus atvertus langus.

Langas → Išd#stymo veiksmas

Controls the basic window arrangement behaviour. In the opening context menu, you can either specify that you want to take care of the window arrangement yourself (Manual mode), Tabbed, Auto-tile vertically, Auto-tile horizontally, Auto-tile or Auto-cascade. Just try them out!

Window → Save session

Directly saves the current session. This will open a context menu where you can select an existing session to save to. It will be overwritten with your current session. See the next item on how to save to a new session.

Langas → Išsaugoti kaip naują sesiją (**Ctrl+Alt+S**)

Išsaugo esančią sesiją nauju pavadinimu. Tai paklaus naujo išsaugomos sesijos pavadinimo.

Langas → #kelti sesiją

#kelia esančią sesiją. Tai atveria kontekstinį meniu, kuriame galite pasirinkti norimą kelti esančią sesiją.

Langas → Ištrinti sesiją

Ištrina esančią sesiją. Tai atveria kontekstinį meniu, kuriame galite pasirinkti, kuri esama sesija turėtų būti ištrinta.

Nustatymai



Nustatymai Konfig#ruoti BibleTime

Atveria BibleTime's pagrindinį konfig#racijos dialogą. Jame galite konfig#ruoti visokių #domius nustatymus, kad pritaikytum#te BibleTime savo poreikiams. Išsamesnei informacijai, prašome ži#r#ti BibleTime konfig#ravimo sekciją.



Nustatymai Knyg# lentynos Tvarkytuv# (**F4**)

Atveria dialogą, kuriame galite keisti savo SWORD konfig#raciją ir tvarkyti savo knyg# lentyną. Išsamesnei informacijai, prašome ži#r#ti Knyg# lentynos tvarkytuv#s sekciją.

Pagalba



Pagalba Žinynas (**F1**)

Atveria BibleTime's žinyną J#s šiuo metu j# skaitote.



Pagalba Biblijos studijavimo instrukcija (F2)



Pagalba Dienos patarimas... (F3)

Pagalba → Apie BibleTime

Opens a guide on how to study the Bible It is the hope of the BibleTime team that this HowTo will provoke the readers to study the scriptures to see what they say. This particular study guide has been chosen as it takes care not to advocate any particular denominational doctrine. We expect you to read and study the scriptures to understand what they say. If you start with the attitude that you want to have the Lord sow his word in your heart He will not disappoint you.

Atveria nauding# patarim# Dienos patarimas suteikia nauding# patarim#, kuris pagelb#s naudojantis BibleTime programa.

Atveria lang#, kuriame pateikiama informacija apie BibleTime projekt# kartu su informacija apie BibleTime programin#s #rangos versij#, projekto talkininkus, SWORD programin#s #rangos versij#, Qt programin#s #rangos versij# ir licencijos sutikim#.

Veikl# rodykl#

Šioje sekcijoje galite rasti, su atvertomis veiklomis susijusi# piktogram#, aprašus.



Slenka pirmyn per istorij#.



Slenka atgal per istorij#.



Pasirinkti #diegt# Biblij#.



Pasirinkti papildom# Biblij#.



Ieškoti pasirinktose veiklose.



Rodyti konfig#racij#.



Pasirinkti #diegtus komentarus.



Pasirinkti papildomus komentarus.



Sinchronizuoti rodom# #raš# su aktyviu Biblijos langu.



Pasirinkti knyg#.



Pasirinkti #diegt# aiškinam#j# žodyn# ar pašventim#.



Pasirinkti papildom# aiškinam#j# žodyn# ar pašventim#.

Spar#i#j# klaviš# indeksas

This is an index of all shortcuts and their corresponding description in the handbook. The shortcuts are sorted (roughly) alphabetical. If you want to directly find out which shortcuts a certain menu item has, you can either look at the entry itself in BibleTime (as it always shows the shortcut), or you can look it in the Main Menu reference.

| Spartieji klavišai | Aprašas |
|--------------------|--|
| Alt+Kair#n | Moves back in the history of read windows. |
| Alt+Dešin#n | Moves forward in the history of read windows. |
| Ctrl+Alt+F | Paieška → Ieškoti standartin#je Biblijoje ekvivalentas; atveria paieškos dialog#, skirt# atlikti paiešk# numatytoje Biblijoje. |
| Ctrl+Alt+G | Langas → Išd#stymo veikseną → Automatiškai iškloti vertikalčiai ekvivalentas; perjungti automatin# lang# išklojim#. |
| Ctrl+Alt+H | Langas → Išd#stymo veikseną → Automatiškai iškloti horizontalčiai ekvivalentas; perjungti automatin# lang# išklojim#. |
| Ctrl+Alt+I | Langas → Išd#stymo veikseną → Automatiškai iškloti ekvivalentas; perjungti automatin# lang# išklojim#. |
| Ctrl+Alt+J | Langas → Išd#stymo veikseną → Automatiškai iškloti pakopomis ekvivalentas; perjungti automatin# lang# išklojim# pakopomis. |
| Ctrl+Alt+M | Langas → Išd#stymo veikseną → Rankin# veikseną ekvivalentas; perjungti rankin# lang# išd#stym#. |
| Ctrl+Alt+T | Langas → Išd#stymo veikseną → Kortel#mis ekvivalentas; tvarko langus viršuje rodom# kortel# d#ka. |

| Spartieji klavišai | Aprašas |
|--------------------|--|
| Ctrl+Alt+S | Window → Save as new session equivalent; saves current layout as new session. |
| Ctrl+Alt+W | Langas → Užverti visus langus ekvivalentas; užveria visus atvertus langus. |
| Ctrl+A | Pažym#ti visk#. Tai pažymi vis# tekst# skaitymo languose. |
| Ctrl+C | Kopijuoti. Tai nukopijuoja pažym#t# tekst# # iškarpin#. |
| Ctrl+F | Paieška. Tai leidžia jums atlikti paiešk# skaitymo lango viduje. |
| Ctrl+G | Langas → Iškloti vertikaliai ekvivalentas. |
| Ctrl+H | Langas → Iškloti horizontaliai ekvivalentas. |
| Ctrl+I | Langas → Iškloti langus ekvivalentas. |
| Ctrl+J | Langas → Išd#styti pakopomis ekvivalentas. |
| Ctrl+L | Keisti viet#. Kei#ia d#mesio centr# # pasirinktos veiklos #ranki# juostos lauk#. |
| Ctrl+N | Atlikti paiešk# šio lango veiklose. |
| Ctrl+O | Search → Search in open work(s) equivalent; opens the search dialog to search in all currently opened works. |
| Ctrl+Q | File → Quit equivalent; closes BibleTime. |
| Ctrl+W | Užveria esam# lang#. |
| F1 | Pagalba → Žinynas ekvivalentas; atveria žinyn#. |
| F2 | Pagalba → Biblijos studijavimo instrukcija ekvivalentas; atveria Biblijos studijavimo instrukcij#. |
| F3 | Pagalba → Dienos patarimas... Atveria nauding#, naudojimosi programa BibleTime, patarim#. |
| F4 | Nustatymai → Knyg# lentynos tvarkytuv# ekvivalentas; atveria Knyg# lentynos tvarkytuv#. |
| F8 | Rodinyš → Rodyti knyg# lentyn# ekvivalentas; perjungia knyg# lentynos rodym#. |
| F9 | Rodinyš → Rodyti perži#ros langel# ekvivalentas; perjungia perži#ros langelio rodym#. |
| Shift+Down | View → Auto scroll down |
| Shift+Up | View → Auto scroll up |
| Space | View → Auto scroll pause |